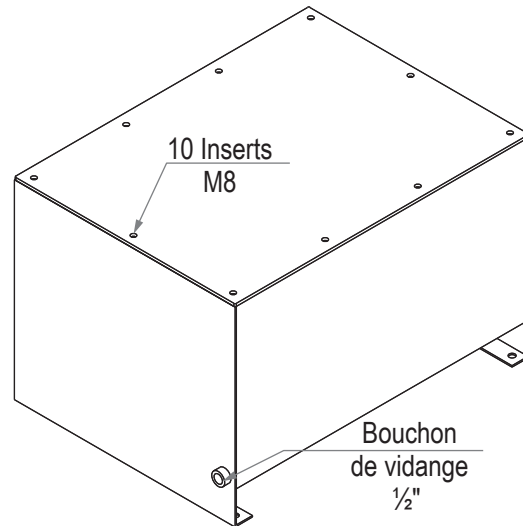
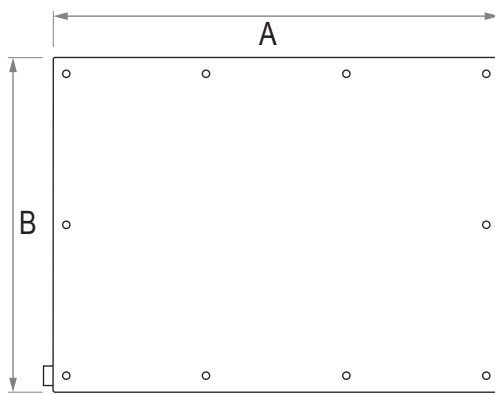
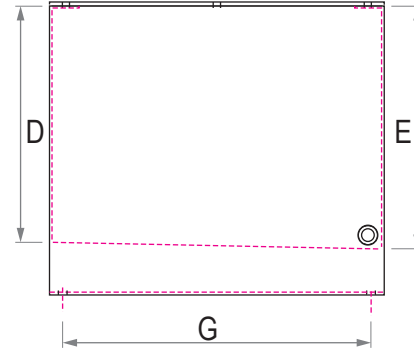
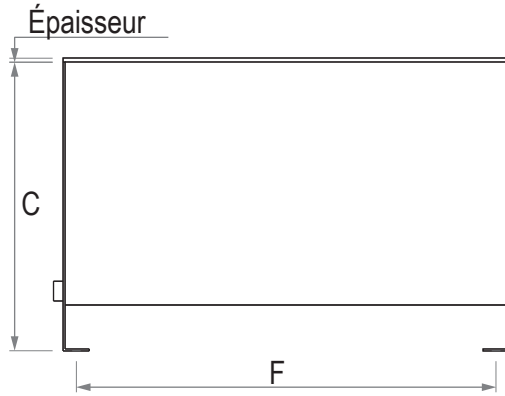
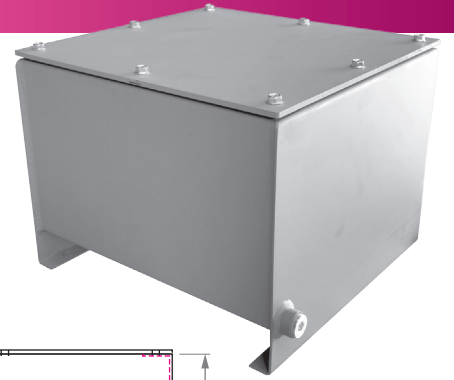


RÉSERVOIR STANDARD

RS



Référence	A	B	C	D	E	F	G	Épaisseur (mm)	Poids (Kg)	
RS 10	300	250	242	175	180	270	220	4	9	
RS 20	400	300	292	210	220	370	270		13,6	
RS 30		390	300	235	245	370	310		19,6	
RS 50	600	350	420	340	350	560	320		28,2	
RS 55		450	340	270	280	560	420		31,5	
RS 60	500	400	425	365	375	460	370		32,8	
RS 75	600	450	420	350	360	560	420		40,5	
RS 100	680	510	440	360	370	640	470		6	49,5
RS 125			520	445	455					54,5
RS 150			620	540	550					60
RS 180	800	600	540	470	480	760	570	71		
RS 200			600	520	530			74,5		
RS 250			660	590	600			79		
RS 300	900	700	650	580	590	860	670	95,5		
RS 400			850	780	790			111		
RS 450			900	830	840			118		

Livré avec un joint en nitrile