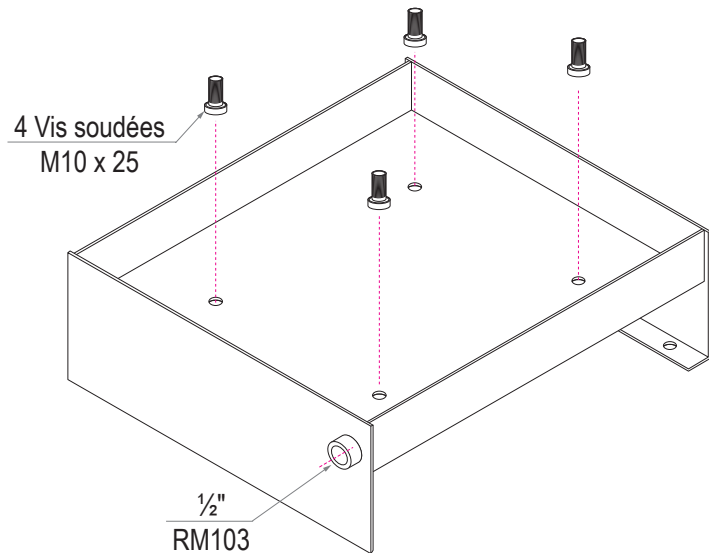
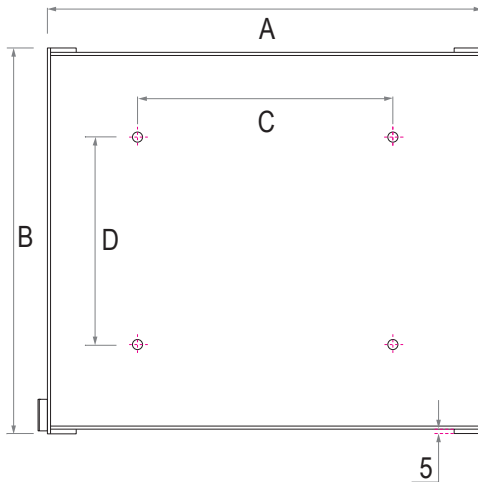
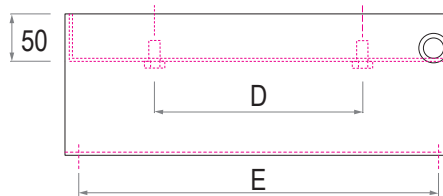
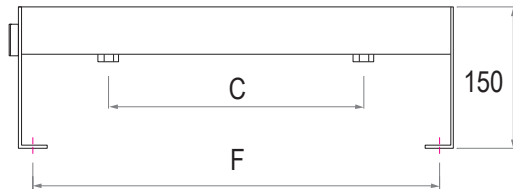
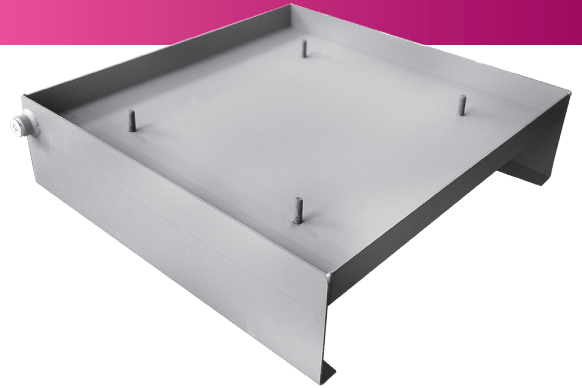


BAC DE RÉTENTION STANDARD

BRB



Référence	Réservoir	A	B	C	D	E	F	Poids (kg)
BRB01	RS10	460	410	270	220	380	430	9
BRB02	RS20	560	460	370	270	430	530	11
BRB03	RS30		550		310			470
BRB04	RSC30 - RSB30	660	460	470	270	430	630	12,5
BRB05	RS60 - RSB63 - RSC63		560	460	370	530		14
BRB06	RS50 - RSC50	760	510	560	320	480	730	15
BRB07	RS55 - RS75		610	560	420	580		16,5
BRB08	RS100 - RS125 - RS150	840	670	640	470	630	800	19
BRB09	RS180 - RS200 - RS250 - RSB100 RSB125 - RSB150 - RSC100	960	760	760	570	630	920	23
BRB10	RSC120 - RSC160			860				720
BRB11	RS300 - RS400	1060	860	860	670	720	1020	28
BRB12	RSC200 - RSC250 - RSC300 RSB200 - RSB250 - RSB400	1360	860	1160	660	830	1320	34
BRB13	RSC400 - RSC600 - RSC800 - RSB600 - RSB800							1060
BRB14	RSB1000 - RSB1000	1660	1160	1440	940	1130	1630	60
BRB15	RSB1500 - RSB2000 - RSC1500 - RSC2000	2160	1410	1940	1150	1380	1910	91