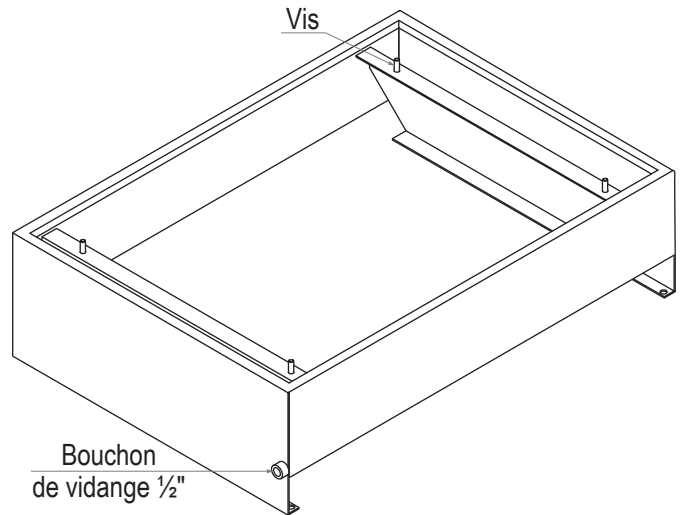
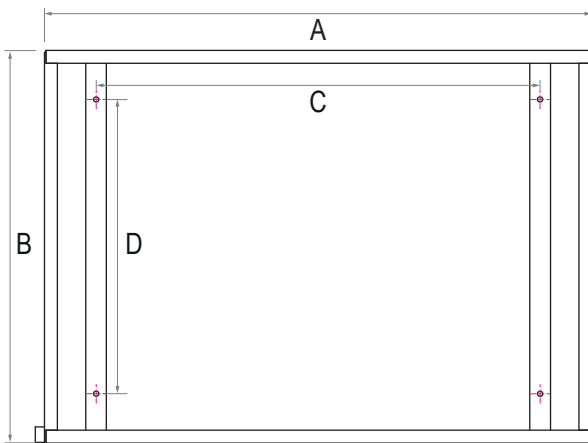
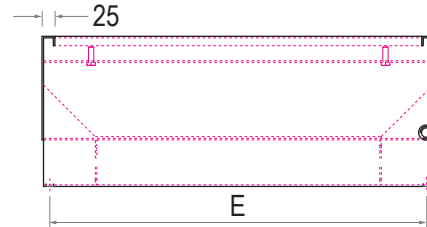
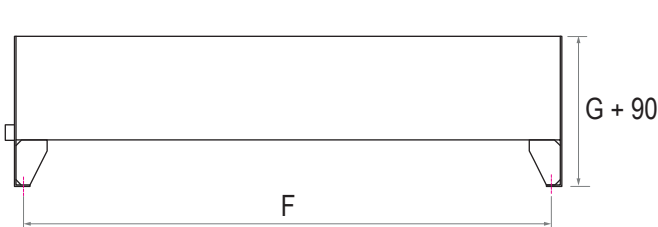
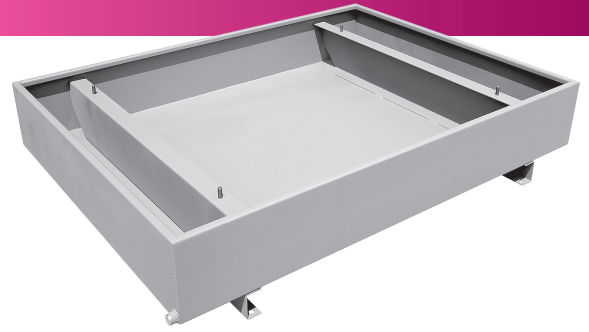


## BAC DE RÉTENTION TOTAL

BRT



Référence	Réservoir	A	B	C	D	E	F	G	Poids (kg)
BRT01	RS10	460	410	270	220	380	430	100	12
BRT02	RS20	560	460	370	270	430	530	150	17
BRT03	RS30		550		310	470			19
BRT04	RSC30 - RSB30	660	460	470	270	430	630	100	16
BRT05	RS60 - RSB63 - RSC63	750	600	460	370	530	720	150	22
BRT06	RS50 - RSC50	760	510	560	320	480	730		24
BRT07	RS55 - RS75	850	650		420	580	820		31
BRT08	RS100 - RS125 - RS150	900	800	640	470	770	870	220	31
BRT09	RSB75 - RSB100 - RSB125 RS180 - RSB150 - RSC100	1100	850	760	570	820	1070	200	45
BRT10	RS200 - RS250	1200	900			870	1170	250	61
BRT11	RSC120 - RSC160	1060	760			860	730	1020	200
BRT12	RS300 - RS400	1400	1200	860	670	1170	840	250	70
BRT13	RSB200 - RSC200 - RSB400 - RSC300 - RSC250	1600	1100	1160	660	1070	1140		74
BRT14	RSC400		1200	1140	850	1170		1140	78
BRT15	RSB600 - RSC600 - RSB800 - RSC800	1800	1500	1140	850	1470	1440	300	107
BRT16	RSB1000 - RSC1000							1440	940
BRT17	RSB1500 - RSC1500 - RSB2000 - RSC2000	2800	1850	2x 970	1150	1820	1930	400	191